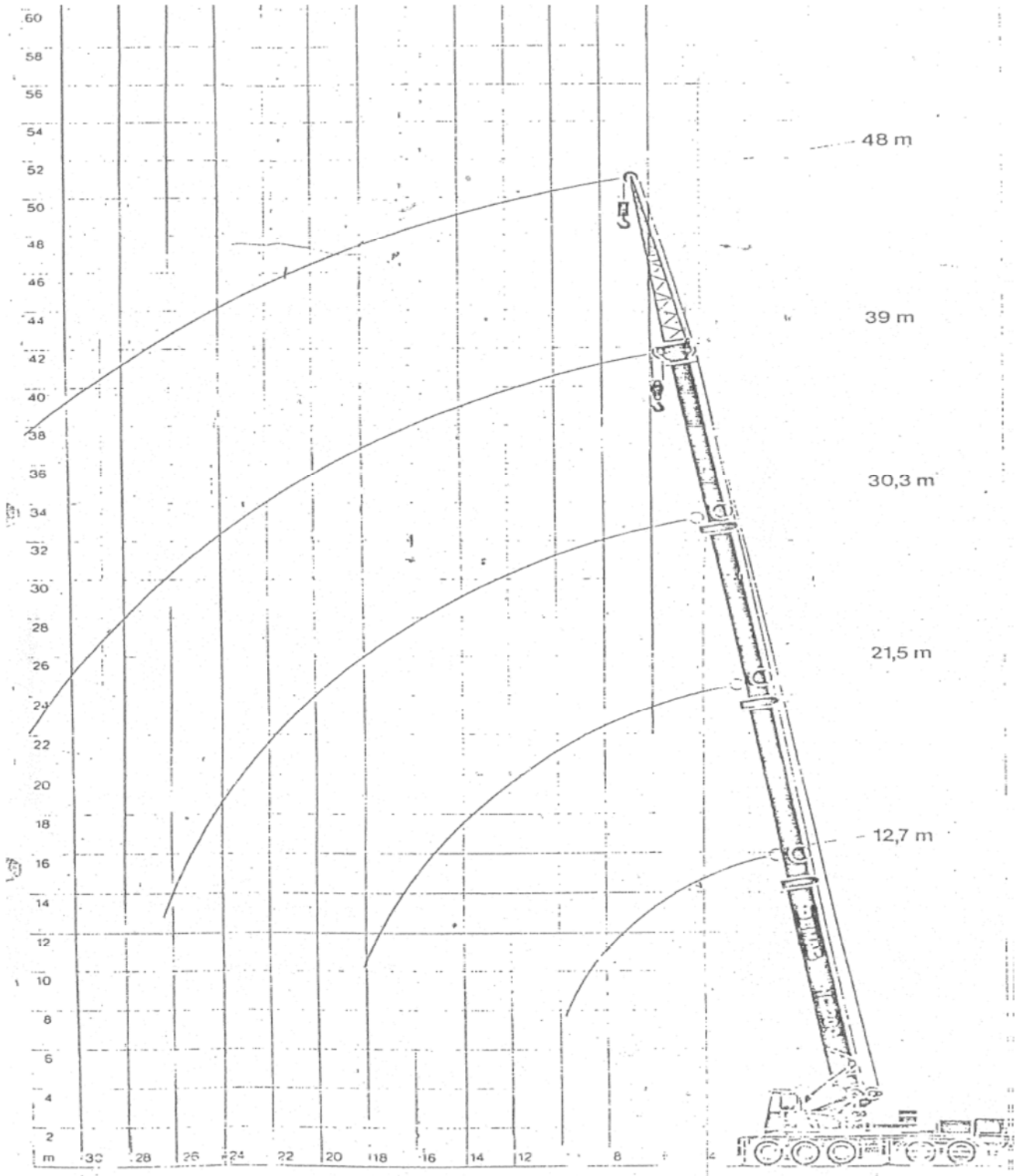


A	14.00-24 pr22	G	8500 mm
B	2499 mm	H	3940 mm
C	6250 mm	I	3490 mm
C1	3000 mm	K	3500 mm
C2	5500 mm	L	1750 mm
C3	2600 mm	M	2200 mm
D	2350 mm	N	150 mm
D1	11360 mm	O	790 mm
E	800 mm	P	1050 mm
E1	1500 mm	R	980 mm
F	2990 mm	R° Grio	15 M
Ejes delanteros		2 x 12000 kg	
Ejes traseros		3 x 12000 kg	
Carga total sobre ejes		60000 kg	



**TABLA DE CARGAS**

CON TODOS LOS CONTRAPESOS									
LARGO DE PLUMA	RADIO	360° 85%			360° 75% Y SOBRE PARTE TRASERA			TRASERA	
		0%	100%	0%	100%	0%	100%	0%	100%
		A	B	B	A	B	B	A	B
		M	T	T	T	T	T	T	T
12,7 MT	3	26.8	85.0	43.0	85.0	26.5	75.0	43.0	75.0
	3.5	23	66.0	38.8	66.5	23.0	65.0	39.8	65.0
	4	19.9	61.4	35.1	61.4	19.9	60.0	35.1	60.0
	4.5	17.4	54.5	30.0	54.5	18.4	52.2	30.0	52.2
	5	15.3	49.5	25.9	49.5	15.3	46.4	25.9	46.4
	6	12.0	40.5	20.0	40.5	12.0	37.5	20.0	37.5
	7	9.4	34.4	16.0	34.4	9.4	31.2	16.0	31.2
	8	7.2	29.6	13.2	29.6	7.2	26.5	13.2	26.5
	9	5.5	25.2	11.0	25.2	5.5	22.8	11.0	22.8
	10	4.2	22.2	9.3	22.2	4.2	19.9	9.3	19.0
21,5 MT	3	25.8	45.0	40.0	45.0	25.8	40.0	40.0	40.0
	3.5	22.0	43.6	36.5	43.8	22.0	38.6	36.6	38.6
	4	18.9	42.0	34.2	42.0	18.9	37.1	34.2	37.1
	4.5	16.4	40.4	29.0	40.4	16.4	35.6	29.0	35.6
	5	14.3	36.5	25.0	36.5	14.3	34.0	25.0	34.0
	6	11.0	35.2	19.2	35.3	11.0	31.1	19.2	31.1
	7	8.5	31.3	15.3	31.5	8.5	27.8	15.3	27.8
	8	6.2	27.8	12.4	27.8	6.2	24.5	12.4	24.5
	9	4.5	24.1	10.5	24.1	4.5	21.3	10.2	21.3
	10	3.2	22.9	8.4	20.9	3.3	18.4	8.4	18.4
30,3 MT	4	-	28.0	-	28.0	-	25.0	-	25.0
	4.5	-	27.0	-	27.1	-	24.0	-	24.0
	5	-	26.1	-	26.1	-	23.3	-	23.3
	6	-	24.3	-	24.3	-	21.7	-	21.7
	7	-	22.5	-	22.5	-	20.1	-	20.1
	8	-	21.0	-	21.0	-	18.6	-	18.6
	9	-	19.5	-	19.5	-	17.2	-	17.2
	10	-	17.7	-	17.7	-	15.7	-	15.7
	12	-	14.2	-	14.7	-	13.1	-	13.1
	14	-	12.1	-	12.1	-	10.7	-	10.7
39 MT	6	-	13.5	-	13.5	-	12.0	-	12.0
	8	-	12.6	-	12.6	-	11.1	-	11.1
	10	-	11.6	-	11.6	-	10.2	-	10.2
	12	-	10.4	-	10.4	-	9.2	-	9.2
	14	-	9.3	-	9.3	-	8.3	-	8.3
	16	-	8.7	-	8.7	-	8.3	-	7.7
	18	-	7.8	-	7.9	-	7.7	-	7.0
	20	-	7.1	-	7.1	-	7.0	-	6.3
	22	-	6.0	-	6.0	-	6.3	-	5.6
	24	-	5.0	-	5.0	-	5.2	-	4.7
12,7 MT	26	-	4.1	-	4.1	-	4.1	-	3.8
	28	-	3.3	-	3.3	-	3.3	-	3.1
	30	-	2.7	-	2.7	-	2.6	-	2.4
	32	-	2.1	-	2.1	-	2.0	-	1.9
	34	-	1.6	-	1.6	-	1.5	-	1.4
	36	-	1.2	-	1.2	-	0.7	-	1.0

CON CONTRAPESO BASICO									
LARGO DE PLUMA	RADIO	360° 85%			360° 75% Y SOBRE PARTE TRASERA			TRASERA	
		0%	100%	0%	100%	0%	100%	0%	100%
		A	B	B	A	B	B	A	B
		M	T	T	T	T	T	T	T
12,7 MT	3	26.8	85.0	41.0	85.0	26.8	75.0	41.0	75.0
	3.5	23.0	66.5	35.7	65.0	23.0	62.7	35.7	62.7
	4	19.8	63.4	29.6	61.4	19.9	54.8	29.6	54.8
	4.5	12.4	53.5	25.1	53.8	17.4	48.5	25.1	48.5
	5	15.2	47.8	21.6	47.6	15.2	43.4	21.6	43.4
	6	11.0	38.5	16.6	38.5	11.0	34.5	16.6	34.5
	7	8.1	32.0	13.2	32.0	8.1	28.2	13.2	28.2
	8	6.0	26.8	10.6	26.8	6.0	23.6	10.6	23.6
	9	4.5	22.8	8.7	22.8	4.5	20.1	8.7	20.1
	10	3.3	19.8	7.2	19.8	3.3	17.4	7.2	17.4
21,5 MT	3	25.8	45.0	43.0	45.0	25.8	40.0	40.0	40.0
	3.5	22.0	43.8	34.0	43.0	22.0	38.6	38.6	38.6
	4	18.9	42.0	28.6	42.0	18.9	37.1	28.6	37.1
	4.5	16.4	40.4	24.2	40.4	16.4	35.6	24.2	35.6
	5	13.6	38.5	20.7	38.5	13.6	34.0	20.7	34.0
	6	9.7	35.3	15.7	35.3	9.7	31.1	15.7	31.1
	7	7.1	31.0	12.3	31.0	7.1	27.3	12.3	27.3
	8	5.1	25.8	9.9	25.8	5.1	22.7	9.9	22.7
	9	3.5	21.6	7.9	21.9	3.5	19.2	7.9	19.2
	10	2.3	18.6	6.3	18.6	2.3	16.5	6.3	16.5
30,3 MT	12	0.6	14.2	4.0	14.2	0.6	12.5	4.0	12.5
	14	-	10.4	2.3	11.0	-	9.2	2.3	9.2
	16	-	7.6	1.1	8.2	-	6.7	1.1	7.0
	18	-	5.9	-	6.9	-	4.9	-	4.9
	4	-	28.0	-	28.0	-	25.0	-	25.0
	4.5	-	27.0	-	27.0	-	24.0	-	24.0
	5	-	26.1	-	26.1	-	23.3	-	23.3
	6	-	24.3	-	24.3	-	21.7	-	21.7
	7	-	22.5	-	22.5	-	20.1	-	20.1
	8	-	21.0	-	21.0	-	18.6	-	18.6
39 MT	9	-	19.5	-	19.5	-	17.2	-	17.2
	10	-	17.7	-	17.7	-	15.7	-	15.7
	12	-	14.2	-	14.7	-	13.1	-	13.1
	14	-	12.1	-	12.1	-	10.7	-	10.7
	16	-	10.1	-	10.0	-	8.8	-	8.8
	18	-	8.0	-	8.0	-	7.0	-	7.2
	20	-	6.2	-	6.2	-	5.4	-	5.8
	22	-	4.5	-	4.5	-	4.1	-	4.6
	24	-	3.9	-	3.9	-	3.1	-	3.6
	26	-	3.1	-	3.1	-	2.4	-	2.9
12,7 MT	28	-	2.3	-	2.3	-	1.8	-	2.0
	6	-	12.5	-	13.5	-	12.0	-	12.0
	8	-	12.6	-	12.6	-	11.1	-	11.1
	10	-	11.6	-	11.6	-	10.2	-	10.2
	12	-	10.4	-	10.4	-	9.2	-	9.2
	14	-	9.3	-	9.3	-	8.3	-	8.3
	16	-	8.7	-	8.7	-	8.3	-	7.7
	18	-	7.8	-	7.9	-	7.7	-	7.0
	20	-	7.1	-	7.1	-	7.0	-	6.3
	22	-	6.0	-	6.0	-	6.3	-	5.6
30,3 MT	24	-	5.0	-	5.0	-	5.2	-	4.7
	26	-	4.1	-	4.1	-	4.1	-	3.8
	28	-	3.3	-	3.3	-	3.3	-	3.1
	30	-	2.7	-	2.7	-	2.6	-	2.4
	32	-	2.1	-	2.1	-	2.0	-	1.9
	34	-	1.6	-	1.6	-	1.5	-	1.4
	36	-	1.2	-	1.2	-	0.7	-	1.0

**TABLA DE CARGAS 360° CON PLUMIN DE 9 MTS – SOBRE ESTABILIZADORES AL 100% - Y TODOS LOS CONTRAPESOS EXTENDIDOS**

RADIO	85%		75%	
	39.3 M	48 M	39.3 M	48 M
MT	TN	TN	TN	TN
8	14	9.6	12.5	8.5
9	14	9.3	12.5	8.2
10	14	9.0	12.5	8.0
12	13.1	8.5	11.6	7.4
14	11.5	7.8	10.2	6.9
16	9.8	7.2	8.6	6.4
18	8.3	6.6	7.4	5.8
20	7.0	6.0	6.3	5.3
22	5.9	5.3	5.3	4.7
24	4.9	4.6	4.4	4.1
26	3.9	4.0	3.5	3.5
28	3.1	3.4	2.8	3.0
30	2.4	2.9	2.2	2.5
32	1.7	2.4	1.7	2.1
34	1.2	1.9	1.2	1.7
36	0.9	1.4	0.8	1.2
38	-	1.0	-	0.9

**PARA TRABAJAR CON LA PLUMA PRINCIPAL CON EL PLUMIN ARMADO SE DEBEN TOMAR LAS SIGUIENTES DEDUCCIONES**

LARGO PLUMA	POSICION DEL PLUMIN		
	POS I	POS II	POS III
MT	15°	38°	60°
	TN	TN	TN
12.7	1.8	2.4	2.7
21.5	1.5	1.9	2.2
30.3	1.4	1.2	1.9
39.0	1.3	1.6	1.7

**TABLA DE CARGAS 360° CON PLUMIN DE 9 MTS VASCULADO – SOBRE ESTABILIZADORES AL 100% - Y TODOS LOS CONTRAPESOS EXTENDIDOS**

LARGO PLUMA	RADIO	POSICION DEL PLUMIN		
		POS I	POS II	POS III
MT	MT	15°	38°	60°
12,7 MT	4.8	5.0	-	-
	5	5.9	-	-
	6	5.3	-	-
	8	4.7	4.2	-
	10	4.3	3.9	2.2
	15	3.5	3.4	2.2
21,5 MT	20	-	-	2.2
	25	-	-	2.2
	6.2	6.0	-	-
	8	5.4	-	-
	10	4.9	4.1	2.2
	15	4.1	3.7	2.2
30,3 MT	20	3.6	3.4	2.2
	25	-	-	2.2
	30	1.9	-	-
	8	6.0	-	-
	10	5.5	-	2.2
	15	4.6	2.9	2.2
39 MT	20	4.0	3.6	2.2
	25	3.6	3.4	2.2
	30	1.9	-	-
	9.3	6.0	-	-
	10	5.8	-	-
	15	5.0	4.0	2.2
39 MT	20	4.4	3.7	2.2
	25			